

TRAVELING EXHIBITION

# STARTLING CREATURES

WHEN SCIENCE RIVALS FICTION

A traveling exhibition project from the Exploramer museum, in collaboration with the Canadian Heritage, the Quebec Network maritime and the Cegep of Matane.



**Exploramer**

La mer à découvrir ★ Discovering the sea

**TRAVELING EXHIBITION**

# **STARTLING CREATURES**

**WHEN SCIENCE RIVALS FICTION**

**The marine ecosystems of the St. Lawrence are full of mysteries!**

**Startling Creatures. When science rivals fiction reveals to you the most unusual secrets of aquatic animal and plant species.**

**To evolve and survive in an constant changing environment, their astonishing physiological mechanisms will surprise you...**

**Using interactive and digital tools, you will learn more about these phenomena :**

- starfish adhesion,
- bioluminescence,
- longevity of bivalves,
- sensory adaptation of rays,
- or even, the mimicry observed in certain species of fish and so many!

**Various video testimonials from researchers in Eastern Quebec, specializing in the marine biology of the St. Lawrence, will complement your discoveries.**

**On their side, children will be able to follow Luna, a Mola mola fish, throughout an educational journey.**

**PRODUCED IN 2021**

**FRENCH AND ENGLISH**

**INTERACTIVE EXHIBITION**

**ACCESS FOR FAMILIES  
AND PUBLIC SCHOOL**

**6 THEMATICS**

**LOCOMOTION**

**COMMUNICATION**

**DEFENSE**

**REPRODUCTION**

**METAMORPHOSIS**

**REALITY SOMETIMES  
SURPASSES FICTION**



# TRAVELING EXHIBITION

## CONTENT

6 zones (5 self-supporting + 1 mural)  
1 children's journey in the exhibition  
(6-13 years old)

### EXHIBITION ELEMENTS

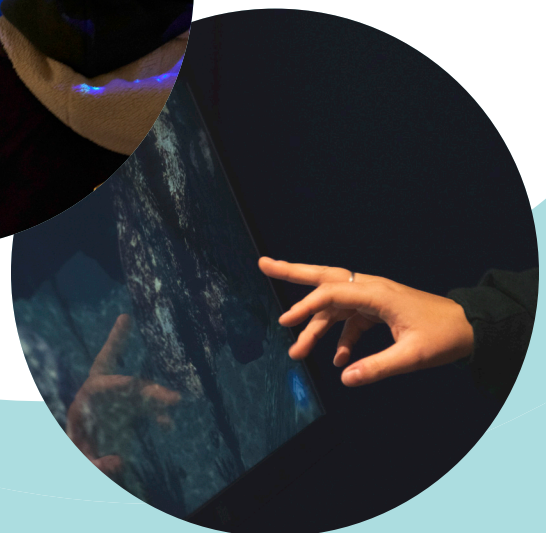
- 5 sections of self-lit panels 84" x 168"
- 11 pannels with mural fixation
  - 1 title panel 46" x 42"
  - 4 panels 80" x 36"
  - 3 panels 80" x 42"
  - 2 panels 50" x 23 7/8"
  - 1 panel 96" x 96"
- 1 exhibition pedestal 70" x 90" x 90"
- 1 mobile scientific cart
- 4 mechanical interactives

### DIGITALS INTERACTIVES

- 3 video terminals - 23" screens
- 2 touchscreen games - 23" and 65" screens
- 1 immersive experience "True depth" technology - 75" screen

### COMPLEMENTS

- 3 artistics bubbles - 18" diameter
- 40 ecofacts
- 2 scupltures



# TRAVELING EXHIBITION

## SPACE REQUIREMENTS AND SPECIFICITIES

### Exhibition adaptability

Exhibition of 150m<sup>2</sup>

Possibility to select a part of the exhibition to adapt to smaller rooms.

### Power supply requirement

- Access to multiple independent power supplies
- 3 continuous electrical outlets (for computers)
- Promote electrification through the ceiling (but with the possibility of adjustment)

## RENTAL'S CONDITIONS

**Adjustable budget depending on the full or partial rental of the exhibition**

**Minimal rental period of 3 months**

The borrower must take out insurance liability of 400,000\$ and comply with Exploramer's requirements regarding the conservation of exhibit's ecofacts.

### FUNDING OPPORTUNITY

This exhibition is eligible from **Government of Canada's Museum Assistance Program (MAP)** for rental of traveling exhibitions.



### RESERVATION AND INFORMATION

[info@exploramer.qc.ca](mailto:info@exploramer.qc.ca)

418 763-2500

The logo for Exploramer, featuring a stylized blue wave above the word "Exploramer" in a bold, blue, sans-serif font.

La mer à découvrir ★ Discovering the sea